



# Gestion des données au cours du projet de recherche

3 heures

Fred de Lamotte - Montpellier  
<https://orcid.org/0000-0003-4234-1172>

Julien Seiler - Strasbourg  
[@julozi](#)



# Bonnes Pratiques

Un projet sur la durée (ré-intro)

Les règles de nommage

Les formats de fichiers

Stockage et accès

Outils et solutions



# Module 2 Séquence 1

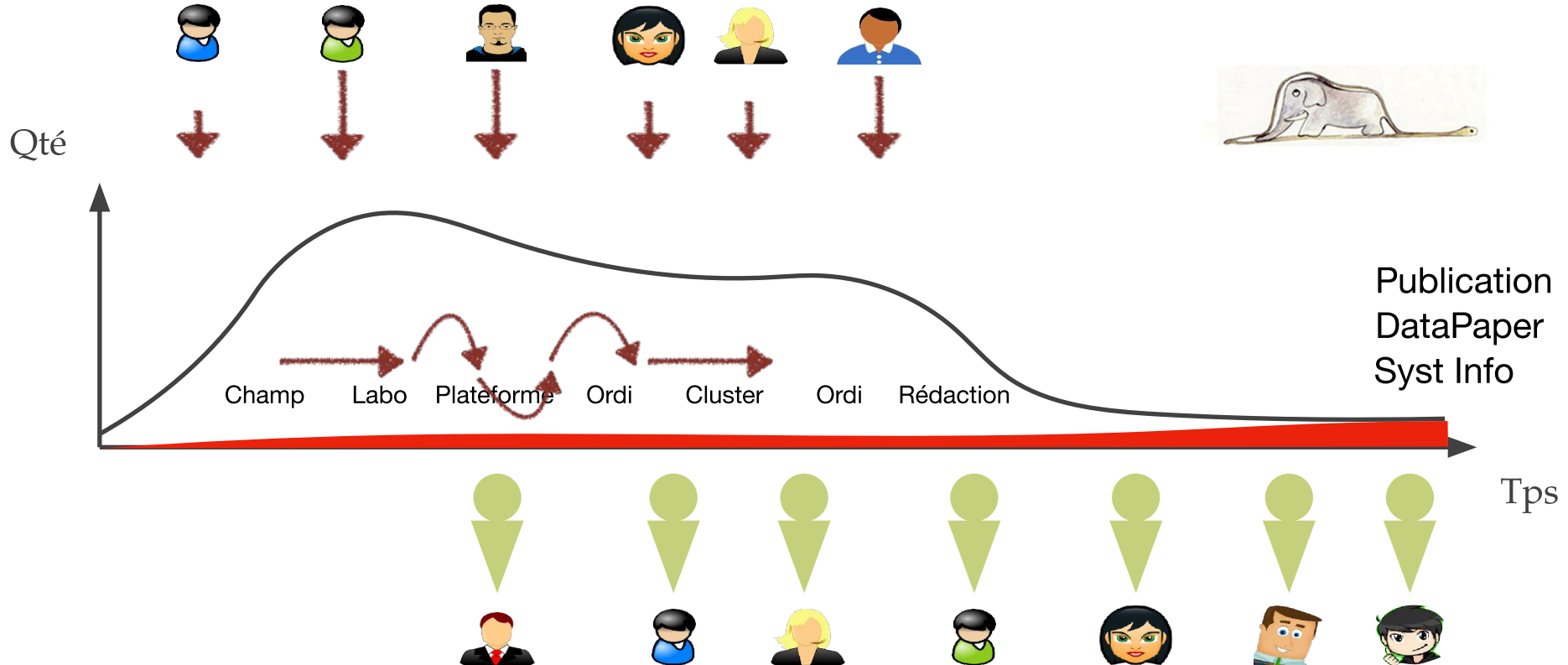
## Introduction

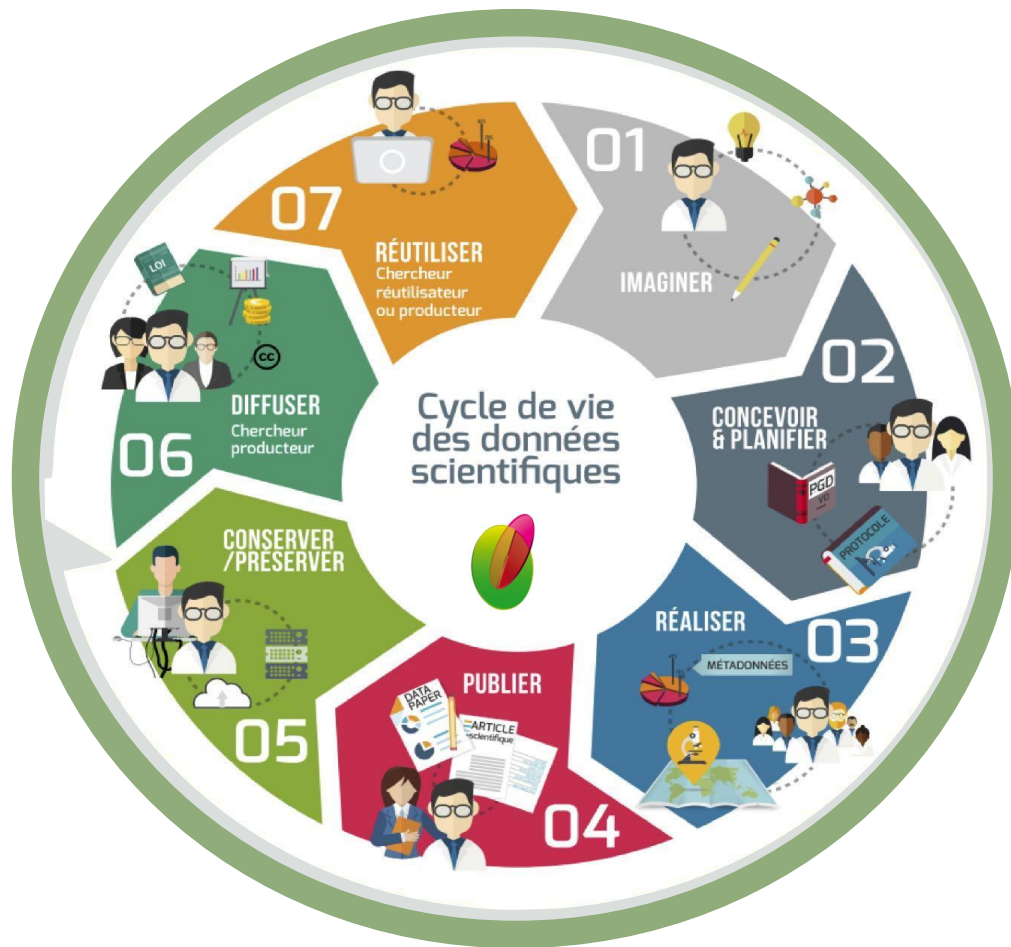
Fred de Lamotte - Montpellier  
<https://orcid.org/0000-0003-4234-1172>

Julien Seiler - Strasbourg  
@julozi



# Rappel : un projet sur la durée





# Bonnes pratiques dans la gestion des données

Plusieurs personnes

Plusieurs techniques

Plusieurs lieux

Plusieurs années

Ne rien perdre

Pouvoir retrouver

Pouvoir réanalyser

Pouvoir partager

# La vie des données

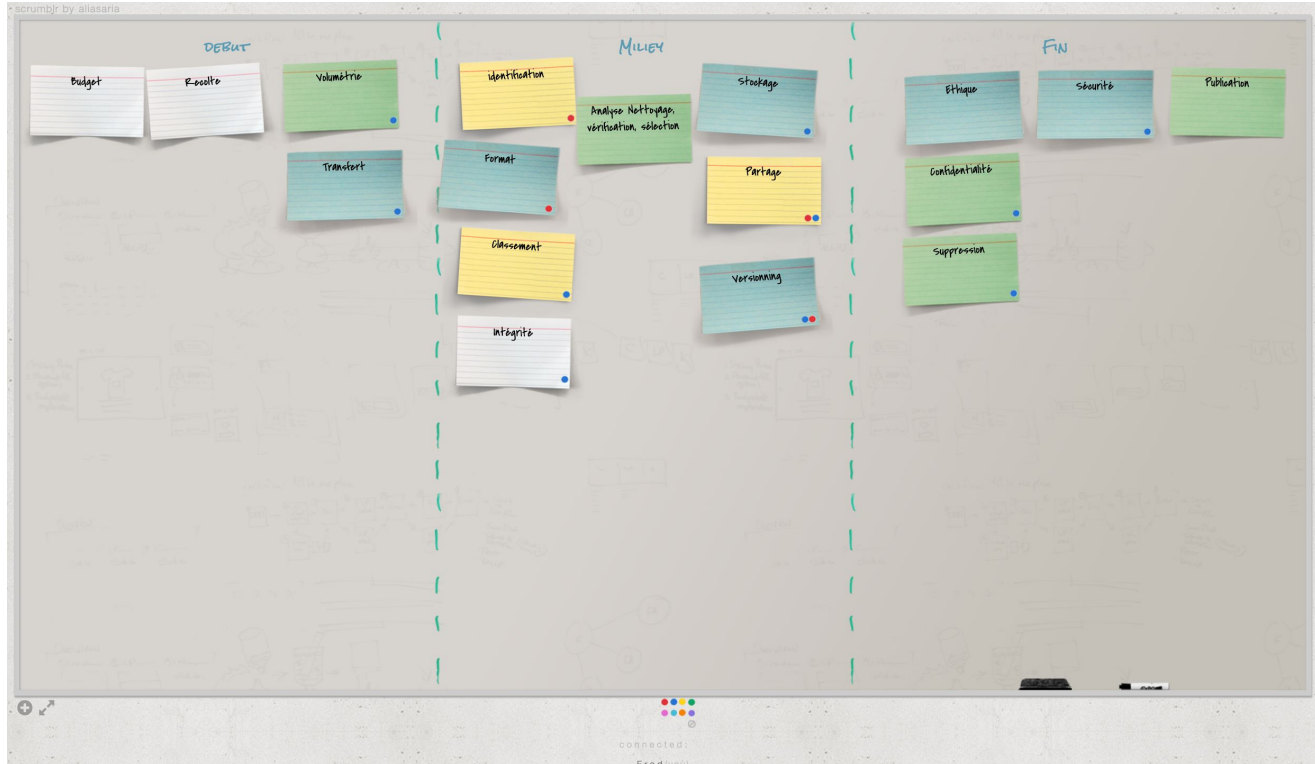


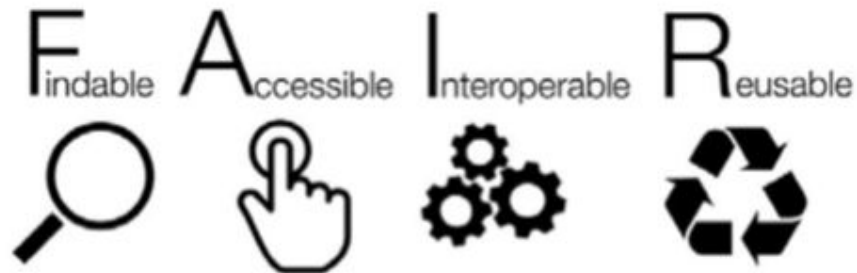


Suite du brise - glace



# La vie des données





'How FAIR are your data?' checklist, CC-BY by Sarah Jones & Marjan Grootveld, [EUDAT](#). Image CC-BY-SA by [SangyaPundir](#)

## Findable

It should be possible for others to discover your data. Rich metadata should be available online in a searchable resource, and the data should be assigned a persistent identifier.

- A persistent identifier is assigned to your data
- There are rich metadata, describing your data
- The metadata are online in a searchable resource e.g. a catalogue or data repository
- The metadata record specifies the persistent identifier

## Interoperable

Data and metadata should conform to recognised formats and standards to allow them to be combined and exchanged.

- Data is provided in commonly understood and preferably open formats
- The metadata provided follows relevant standards
- Controlled vocabularies, keywords, thesauri or ontologies are used where possible
- Qualified references and links are provided to other related data