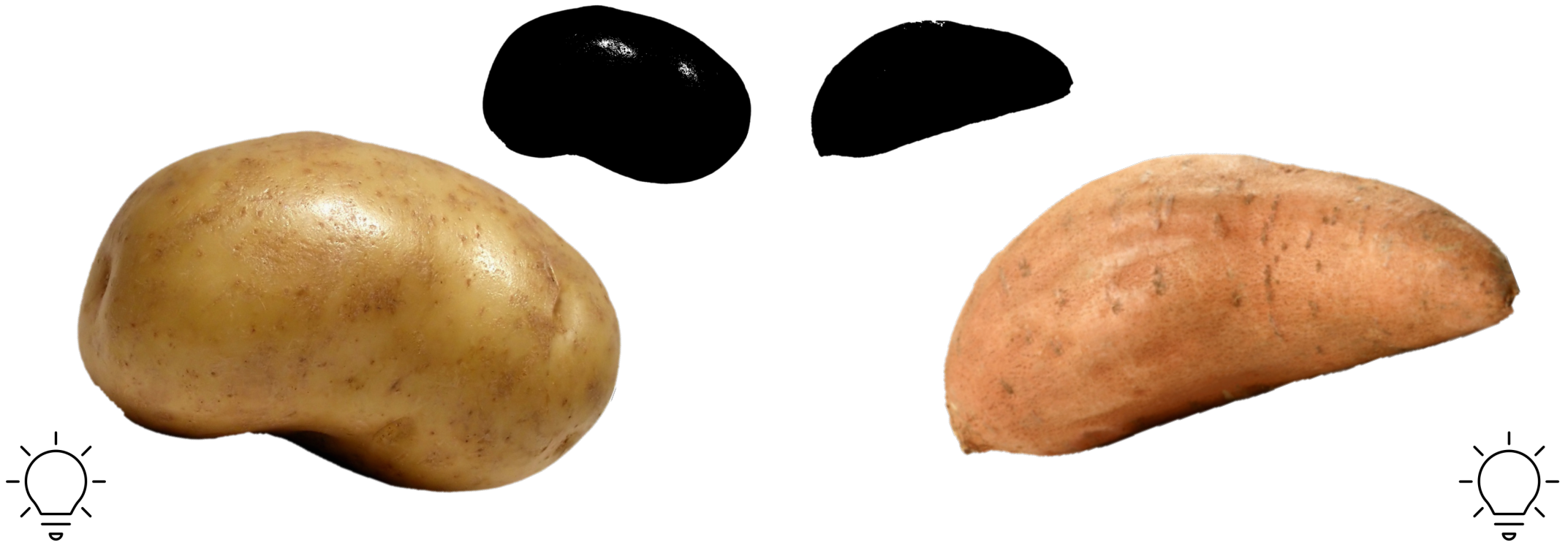
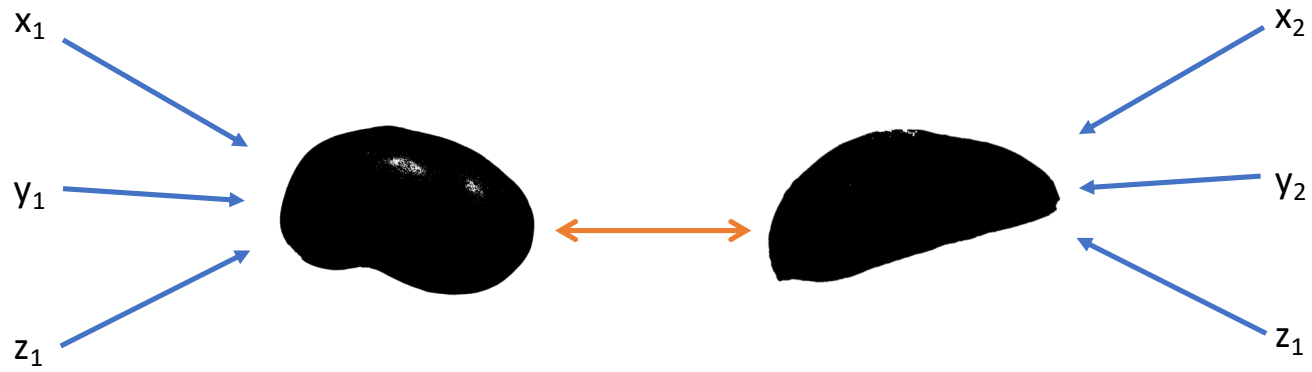


Intégration de deux blocs de
données

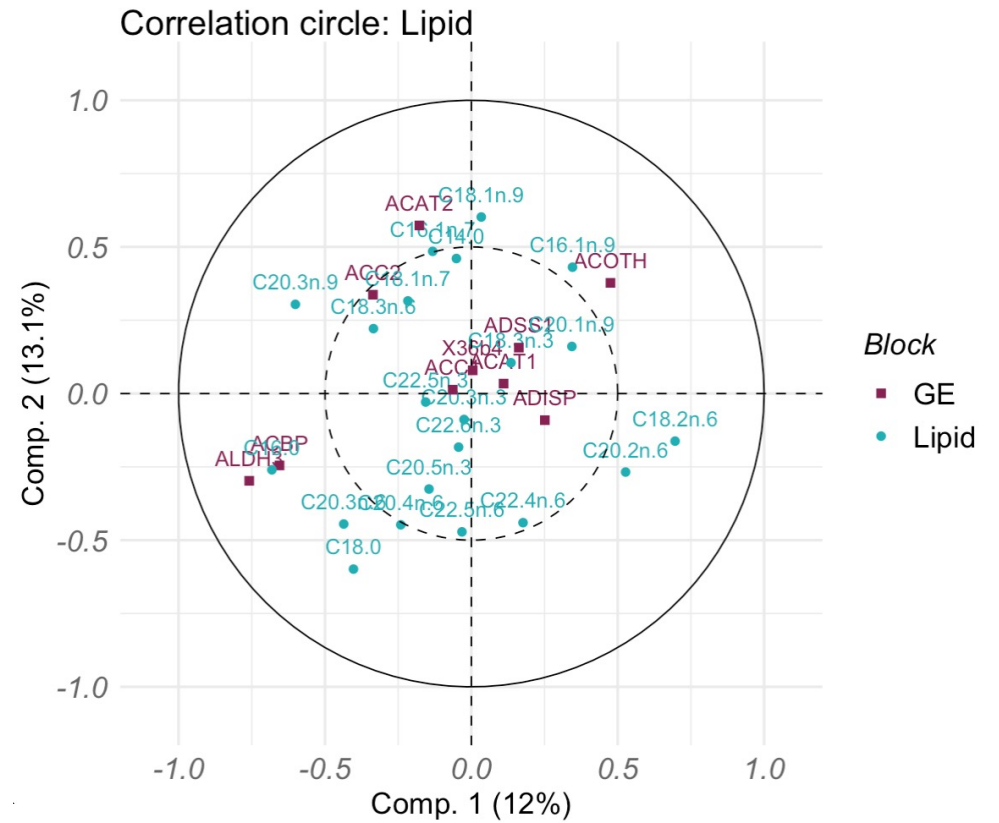
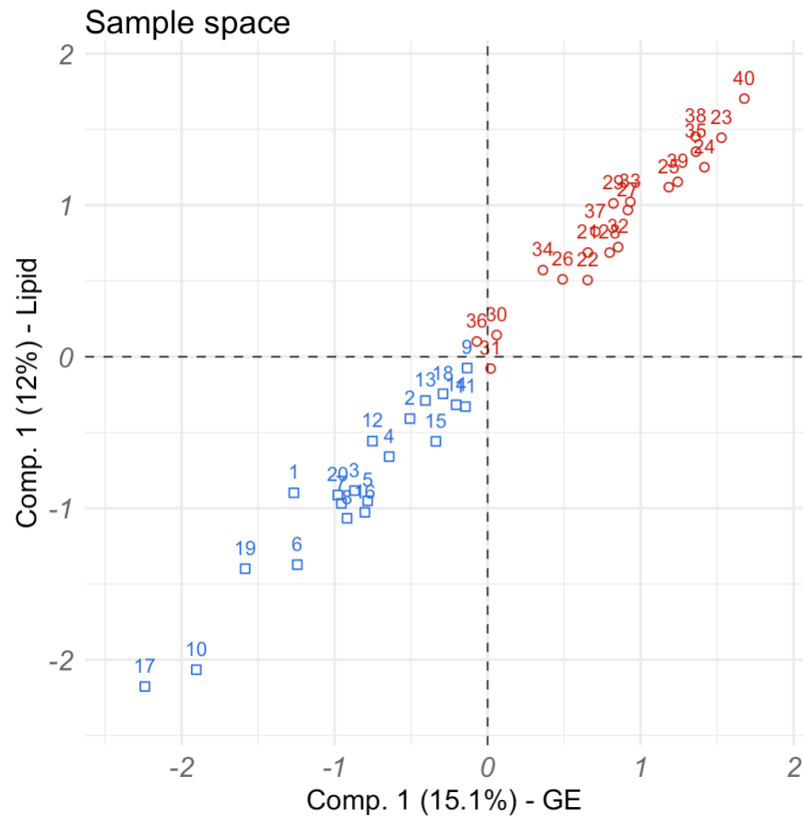
Le théâtre des ombres de patates



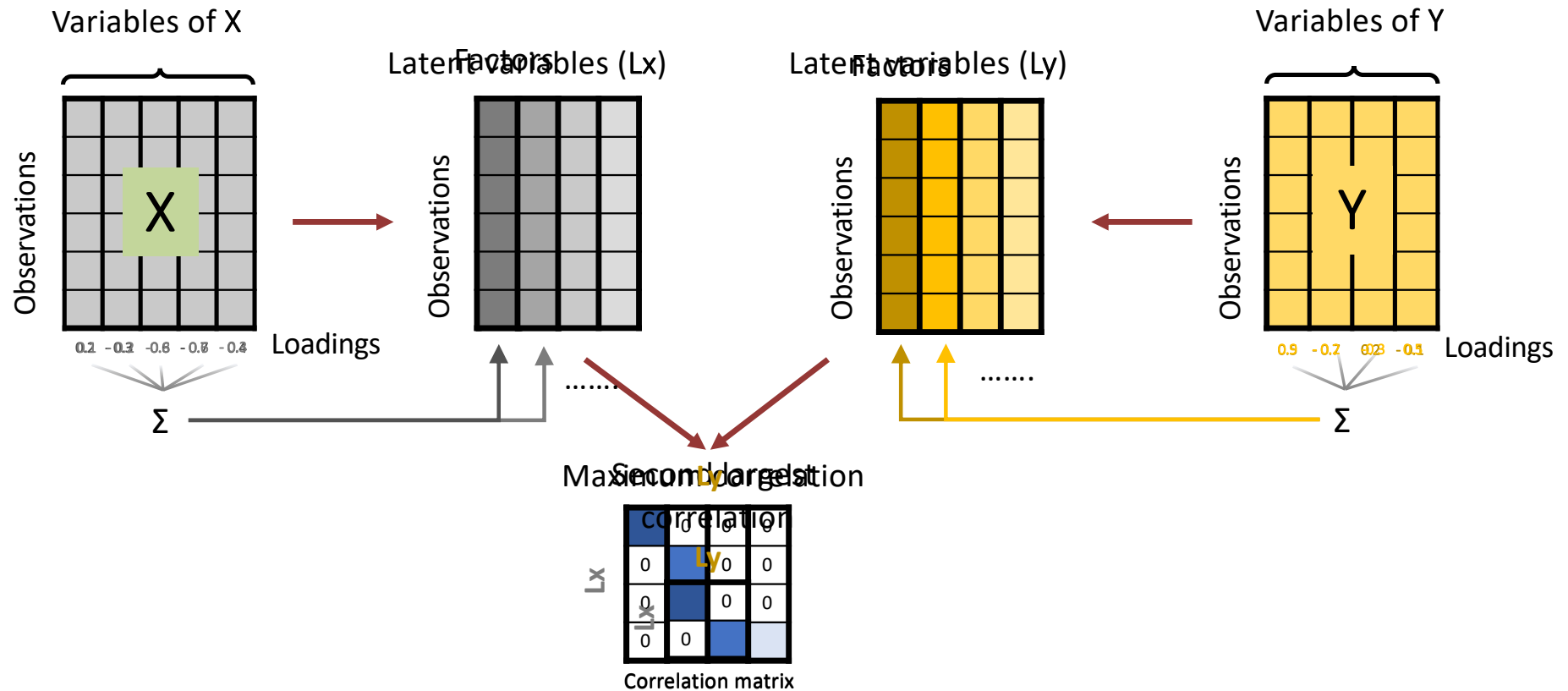
Patatomiques



Ce que l'on souhaite obtenir

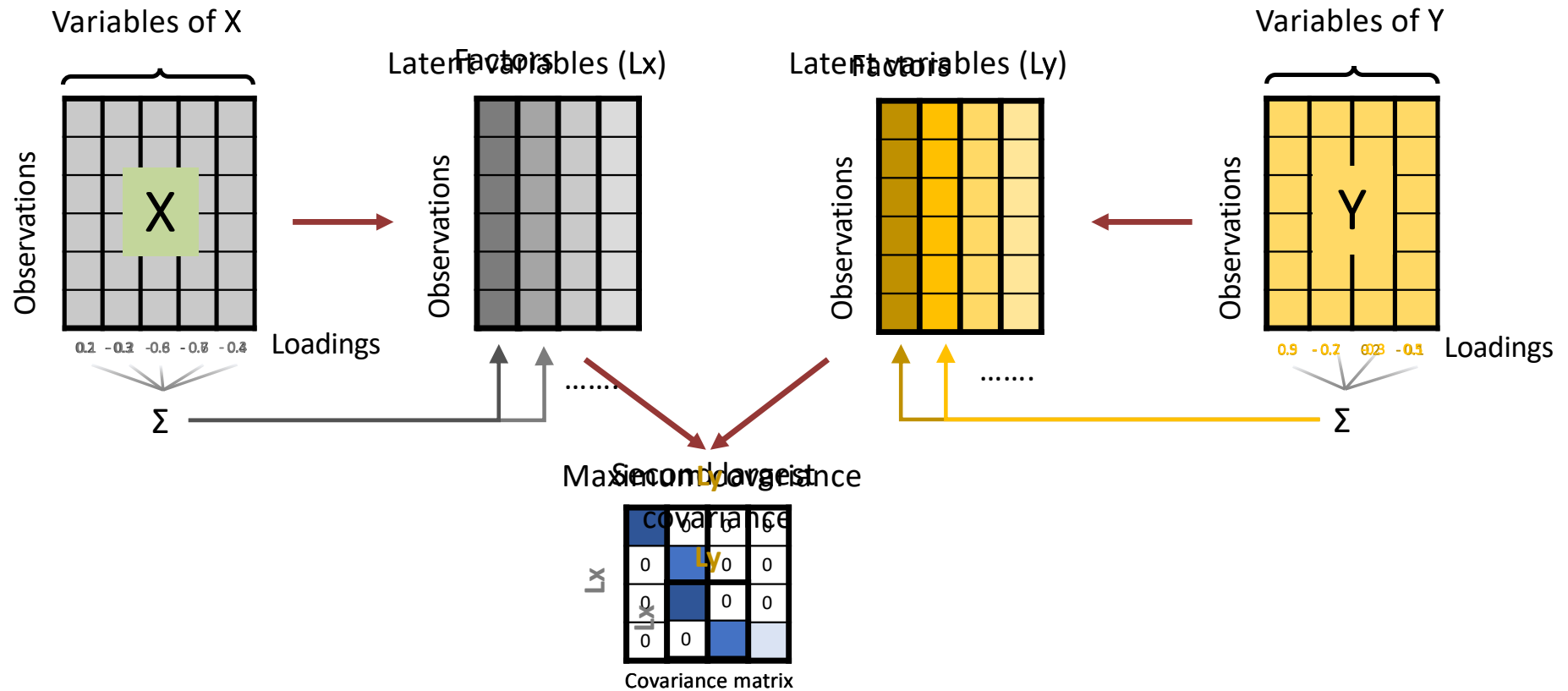


Analyzing two data tables: CCA



Credits: Ju-Chi Yu

Analyzing two data tables: PLS-C



Credits: Ju-Chi Yu



CCA en pratique

Sur les données fruits parce que c'est plus facile